

TIGGO 4 PRO



Model Year 2025

Specification Sheet



CHERY



Enjoy new confidence with the street smart Tiggo 4 Pro, starting at just \$23,990 drive away.

Technology and style combine in the best value turbo powered compact SUV available in Australia. The 1.5L turbo engine and 10.25 inch dual-screen make this a perfect car for city driving. Stay in touch and sound-track your ride with wireless Android Auto™ and Apple CarPlay™ providing seamless connectivity for Android and iPhone.

A smart choice for those always on the move, the Tiggo 4 Pro gives you confidence to get the most out of your city.

Dimensions

| | |
|----------------|-------|
| Length (mm) | 4,351 |
| Width (mm) | 1,831 |
| Height (mm) | 1,662 |
| Wheelbase (mm) | 2,610 |

Luggage Capacity

| | |
|--|-------|
| Volume (L) VDA to Seat Back | 380 |
| Volume (L) VDA to Roof | 500 |
| Volume (L) VDA 2nd Row Seats Folded, to Roof | 1,225 |

SPECIFICATIONS

Engine & Transmission

| | |
|-----------------------|-------------------------|
| Engine Type | 1.5L Turbo Petrol |
| Capacity (CC) | 1,498 |
| Fuel Injection | Indirect |
| Bore x Stroke (mm) | 77 x 80.5 |
| Max Power (kW @ rpm) | 108 @ 5,500 |
| Max Torque (Nm @ rpm) | 210 @ 1,750 - 4,000 |
| Compression Ratio | 9.5 : 1 |
| Transmission Type | CVT |
| Driven Wheels | Front Wheel Drive (2WD) |

Fuel Consumption and Emissions*

| | |
|---|---------------------------|
| Fuel Consumption – Urban (L/100km) | 8.9 |
| Fuel Consumption – Extra Urban (L/100km) | 6.4 |
| Fuel Consumption – Combined (L/100km) | 7.3 |
| CO ² Emissions – Urban (g/km) | 202 |
| CO ² Emissions – Extra Urban (g/km) | 145 |
| CO² Emissions – Combined (g/km) | 166 |
| Fuel Tank Capacity (L) | 51 |
| Fuel Type Recommended | Unleaded 91 RON or Higher |

*Figures according to ADR 81/02 derived from laboratory testing. Factors including but not limited to driving style, road and traffic conditions, environmental influences, vehicle condition and accessories fitted, will in practice in the real world lead to figures which generally differ from those advertised.

Advertised figures are meant for comparison amongst vehicles only.

Vehicle Weights

| | |
|-------------------------|-------|
| Tare Mass (kg) | 1,388 |
| Gross Vehicle Mass (kg) | 1,799 |

Steering, Brakes and Suspension

| | |
|---|---------------------------------|
| Electronic Power Steering System (EPS) | • |
| Brakes - Front / Rear | Ventilated Disc / Solid Disc |
| Electronic Parking Brake (EPB) with Auto Hold | • |
| Suspension Type - Front / Rear | Macpherson Strut / Torsion Beam |
| Drive Modes | Eco / Sport |

Wheels & Tyres

| | URB | ULT |
|---------------------------------|-------------|--------------------------------|
| Wheels | 17" Alloy | 18" Alloy |
| Wheel Design | Gloss Black | Machine Finish with Red Accent |
| Tyres | 215/60 R17 | 215/55 R18 |
| Temporary Spare Wheel | • | • |
| Tyre Pressure Monitoring System | • | • |



URB Urban Model **ULT** Ultimate Model

SAFETY FEATURES

Security

| | |
|---|---|
| Anti-Theft Immobiliser | • |
| Burglar Alarm | • |
| Proximity Keys (x2) with Remote Engine Start | • |
| Passive-Entry-Passive-Start | • |
| Auto Locking (Walk Away) | • |
| Remote Open and Close Windows | • |

General

| | |
|---|---------------------|
| Anti-Skid Brake System (ABS) | • |
| Brake Assist System (BAS) | • |
| Electronic Stability Program (ESP) | • |
| Traction Control System (TCS) | • |
| Multi-Collision Brake (MCB) | • |
| Hill-start Assist Control (HAC) | • |
| Electronic Brake Assist (EBA) | • |
| Seatbelt Reminder (All Positions) | • |
| Seatbelt Pretensioners (1st Row, 2nd Row Outboard) | • |
| Height Adjustable Front Seatbelts | • |
| Child Safety Locks (Rear Doors) | • |
| Top Tether Anchors (3 Positions) | • |
| ISOFIX (2 Positions) | • |
| Driver & Front Passenger Airbags (2 Total) | • |
| Front Side Airbags (2 Total) | • |
| Curtain Airbags (2 Total) | • |
| Front Centre Airbag (1 Total) | • |
| Rear Seat Reminder (CPD) - Door History Type | • |
| Rear Parking Sensors (x4) | • |
| Reverse Camera | • |
| 360° Around View Monitor | Ultimate Model Only |

ADAS*

| | |
|---|---|
| Forward Collision Warning (FCW) | • |
| Autonomous Emergency Braking (AEB) | • |
| Emergency Lane Keeping (ELK) | • |
| Lane Departure Warning (LDW) | • |
| Lane Departure Prevention (LDP) | • |
| Adaptive Cruise Control (ACC) | • |
| Traffic Jam Assist (TJA) | • |
| Integrated Cruise Assist (ICA) | • |
| Blind Spot Detection (BSD) | • |
| Lane Change Assist (LCA) | • |
| Rear Cross Traffic Alert (RCTA) | • |
| Rear Cross Traffic Braking (RCTB) | • |
| Door Opening Warning (DOW) | • |
| Speed Limit Information Function (SLIF) | • |
| Speed Control Assist (SCF) | • |
| Driver Monitoring System (DMS) | • |

*Driver assistance systems are not a substitute for the driver's control over the vehicle. The driver remains responsible for the vehicle.

INTERIOR FEATURES

| Seating | URB | ULT |
|--|--------|--------------------|
| Number of Seats | 5 | |
| Seat Material | Cloth | Artificial Leather |
| 6-way Driver's Seat Inc. Height Adjust | Manual | Powered |
| 4-way Adjustable Front Passenger Seat | Manual | Manual |
| Heated Front Seats | – | • |
| Split Fold Rear Seats (60:40) | • | • |

General

| | | |
|---|---|---|
| Artificial Leather Steering Wheel | • | • |
| Steering Wheel Mounted Controls (Audio & Bluetooth) | • | • |
| Steering Wheel Adjustment (Tilt & Telescopic) | • | • |
| Soft Touch Dashboard with Contrast Stitching | • | • |
| Glasses Case | • | • |
| Driver Foot Rest | • | • |
| Gloss Black Dashboard Control Panel | • | • |
| Gloss Black Centre Console | • | • |
| Front Centre Console Armrest with Storage Box | • | • |
| 2 x Cup Holders (Front) | • | • |
| 2 x Cup Holders (Second Row Armrest) | • | • |

Lighting

| | | |
|---------------------------------|---|---|
| LED Interior Light (First Row) | • | • |
| LED Interior Light (Second Row) | – | • |
| Boot Light | • | • |

| Air Conditioning | URB | ULT |
|--------------------------------------|-----|-----|
| Touch Sensitive Control Panel | • | • |
| Dual-Zone Automatic Air Conditioning | • | • |
| Second Row Air Vent | • | • |

Infotainment

| | | |
|--|---|---|
| Dual 10.25" LCD Instrument Cluster and Integrated Multimedia Touchscreen | • | • |
| 4 Speaker Sound System (4x Speakers) | • | – |
| 6 Speaker Sound System (4x Speakers, 2x Tweeters) | – | • |
| AM / FM Tuner | • | • |
| DAB+ Radio | • | • |
| Bluetooth | • | • |
| Apple Carplay™ & Android™ Auto (Wired + Wireless) | • | • |
| Intelligent Voice Command (Hello Chery) | • | • |

Apple CarPlay™ is a registered trademark of Apple Inc. Android™ Auto is a registered trademark of Google Inc. Apple CarPlay™ and Android™ Auto require compatible devices for connectivity.

Connectivity & Device Charging

| | | |
|--|---|---|
| Front USB Type-A [Inside Console] (Charge & Data Transmission) | • | • |
| Front USB Type-A [Inside Console] (Charge Only) | • | • |
| Rear USB Type-A (Charge Only) | • | • |
| 1 x 12 Volt Power Outlet (Front) | • | • |

URB Urban Model ULT Ultimate Model

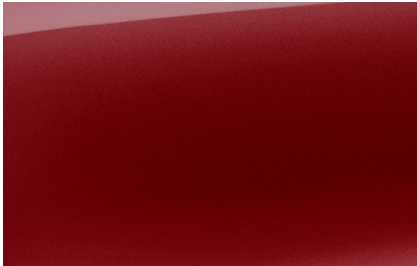
EXTERIOR FEATURES

| Design | URB | ULT | Wipers | URB | ULT |
|---|-----|-----|--|-----|-----|
| Gloss Black Diamond Grille | • | • | Rain Sensing Front Wipers (Low / Hi + 4 Sensitivity Levels) | • | • |
| Silver Roof Rails | • | • | Rear Wiper (Single Speed) | • | • |
| Shark Fin Antenna | • | • | Mirrors | | |
| Rear Spoiler | • | • | Heated Outside Mirrors | • | • |
| Chrome Window Surround (Lower) | – | • | Power Adjustable Outside Mirrors | • | • |
| Red Brake Calipers | – | • | Power Folding Outside Mirrors | – | • |
| Lighting | | | Windows & Glass | | |
| LED Headlights (Reflector Type) | • | • | Acoustic Glass (Windscreen) | • | • |
| LED Daytime Running Lights (DRLs) | • | • | Power Windows with Auto Up / Down Function (Anti-Pinch) | • | • |
| Automatic Headlights with "Follow Me Home" Function | • | • | Power Sunroof with Sunshade | – | • |
| Intelligent Headlamp Control (IHC) - Auto Highbeam | • | • | Rear Windshield Demister | • | • |
| Manual Headlight Load Level Adjustment (Infotainment) | • | • | | | |
| Tail Lights (Incandescent Bulb) | • | • | | | |
| LED High Mounted Stop Light | • | • | | | |
| Rear Fog Lights (Incandescent Bulb) | • | • | | | |

URB Urban Model
 ULT Ultimate Model

COLOURS

Martian Red (NL)



Lunar White* (BW)



Mercurial Grey* (GV)



Star Silver* (KH)



Space Black* (CL)



*Premium paint.
Exact colours may vary. Consult your dealer for all variety and tones available.



For more details visit cherymotor.com.au

Edition 1.0 December 2024 \ Model Year 2025



All visuals & features are based on data available at the time of publication and subject to change without notice. All information provided in this brochure applies to the Model Year 2025 Tiggo 4. While every effort has been made to ensure the accuracy of this brochure and the availability of vehicles and features at the time of publication, discrepancies and variations may occur from time to time. To the maximum extent permitted by law, Chery Motor Australia Pty Ltd shall not be liable in any way as a result of any reliance by any person on anything contained in this document, including for any loss or damage suffered or incurred by a purchaser or prospective purchaser in case of inaccuracies or outdated information, or if any vehicles or features mentioned in this brochure are withdrawn from the market. Please be aware that specifications, features, and model availability are subject to change without notice. We recommend consulting your authorised Chery Dealer before placing an order to obtain the most current information on model availability, specifications, options, features, and prices. Chery Motor Australia Pty Ltd ABN 28 662 958 205, located at Suite 3.03, 1F Homebush Bay Drive, Rhodes, NSW 2138.